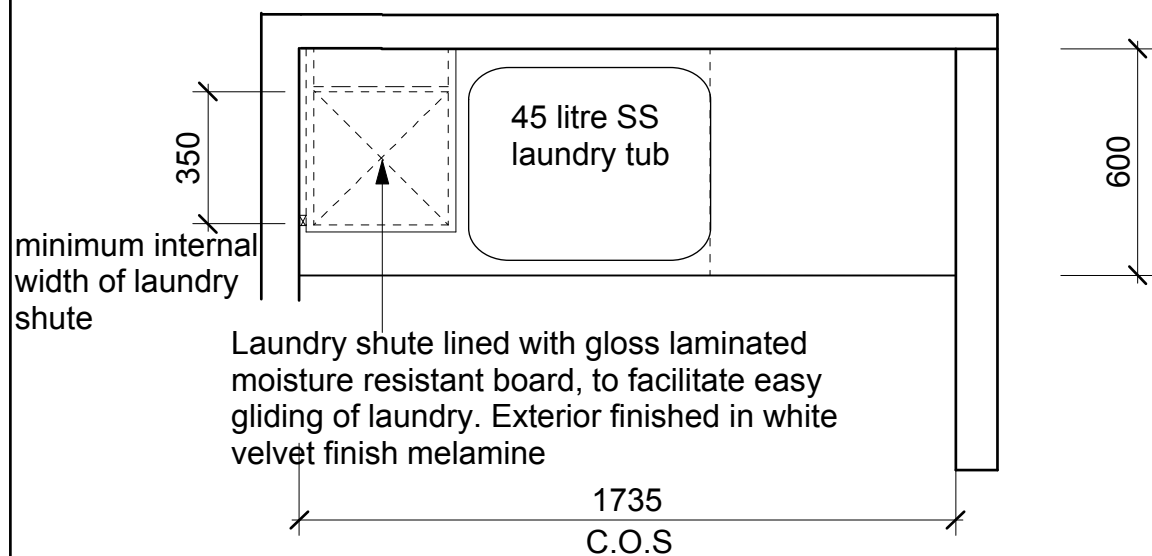
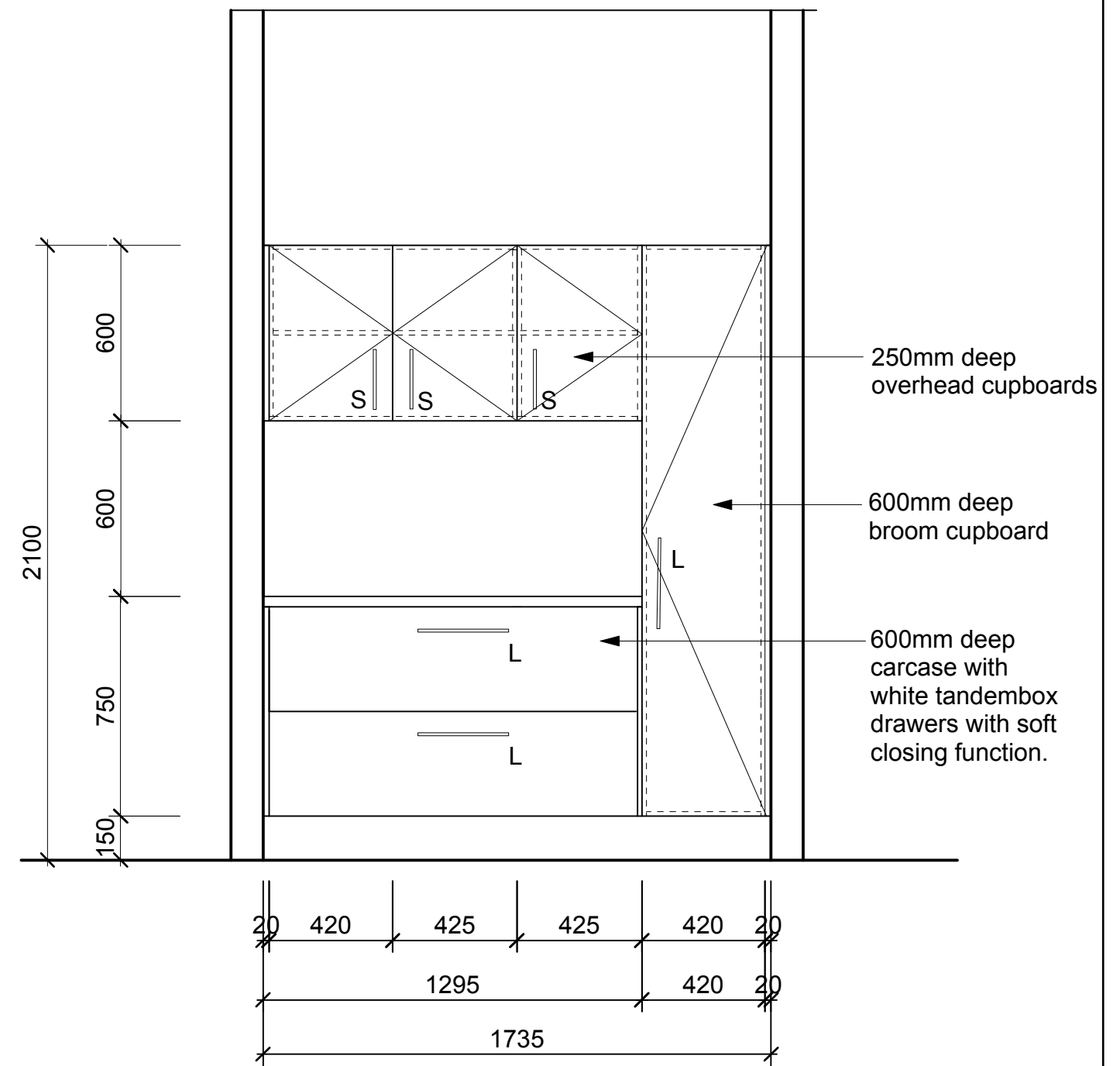


**ELEVATION -Northern wall**



**PLAN-Northern wall**

C 10-8-2011 Preliminary



**ELEVATION -Southern wall**

**LEGEND**

- F- Fixed Shelf
- A-Adjustable Shelf

**FINISHES**

- Carcass & Shelving-16mm EO white melamine- velvet finish, 1mm white edging
- Benchtop, doors & drawer fronts- White flint laminex. Benchtop 32mm with rolled front edge, with 16mm overhang.
- Handles- Stainless steel D-pull, KETHY E2118/288 longer handles (L), KETHY E2118/192 shorter handles.(S)
- Kickboard- White laminate, over flood compatible framework.